



UNIVERSITY OF KENTUCKY  
COLLEGE OF **ARTS**  
& **SCIENCES**



INSIDER'S GUIDE



[AS.UKY.EDU/FALL](http://AS.UKY.EDU/FALL)

## A&S FALL 2014 COURSES

Use this Insider's Guide to see recommended courses and plan your fall schedule, or visit [as.uky.edu/fall](http://as.uky.edu/fall) to conveniently sort through all Fall courses to find what you need.

Contact your advisor about registration and any other questions you may have.



### AMS 101:001 Introduction to the Army

This introductory level course is designed to give students an appreciation for the role the Army currently plays in our society. Students will have a basic understanding of the history of the Army and the roles and relationships of the Army within our society. The course also sharpens students' basic skills necessary for today's leaders, including oral presentation, time management, map reading, basic rifle marksmanship and squad tactics.



### ANT 102:001-003 Archaeology: Mysteries and Controversies

Scientific archaeology has a problem: fringe ideas about mysteries of the past attract more interest than scholarly accounts of these same mysteries. In discussing the "hysterious" side of archaeology, this course asks why consideration of the past invites some of the most bizarre speculations about human life. We focus on two kinds of controversies: fantastic claims in the past and debates in the present.

FULFILLS UK CORE: THE NATURE OF INQUIRY IN THE SOCIAL SCIENCES



### ANT 221:001 Native People of North America

This course surveys Native American cultures of North America and the impact of four centuries of British, French, Spanish, and Russian contact on Native American societies. Particular emphasis is placed on comparing and contrasting cultural characteristics of Native American groups living in ecologically diverse regions of North America, and the status of Native Americans in present-day North America.

FULFILLS UK CORE: COMMUNITY, CULTURE, CITIZENSHIP IN THE USA



### ANT 251:001 Global Health: Culture, Pathologies

How do globalization and development affect health and illness? How do public health interventions influence global health crises in both positive and negative ways? This course addresses these and other questions and examines health effects of economic collapse, disasters and socio-political changes in industrialized and developing countries.



### ANT 342:001 North American Archaeology

Learn about prehistoric hunter-gatherers that lived in North America at the end of the last Ice Age more than 10,000 years ago! Explore how and why their descendants established far-reaching trade networks more than 5,000 years ago. Discover how prehistoric Native Americans domesticated native plants and developed into horticultural societies at least 3,000 years ago. Investigate complex agricultural societies that formed in the American Southwest and Southeast more than 1,000 years ago.



### ANT 352:001 Topics in Anthropology: Aging in Cross-Cultural Perspective-So You Think You Will Never Get Old?!

What does it mean to "get old?" The class will cover such topics as global demography of aging, ethnicity and aging, intergenerational relationships, the organization of care for elders, gender, cultural attitudes, beliefs and practices, health and nutrition, and the politics of aging. More importantly, this course will help you to understand why you should think about aging now, and how to age well yourself!



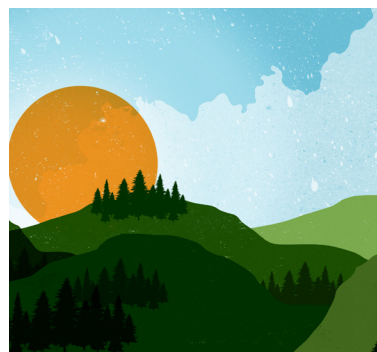
**ANT 352:003**  
**Special Topics in Cultural Anthropology: Indigenous Identities and Movements in Latin America**

This course addresses the following questions: Why are some of the most successful indigenous movements not progressing or undergoing a relative crisis? Students will study the reasons for the emergence of indigenous political movements in the region since the 1970s, their objectives, and the challenges they have posed to liberal ideas of citizenship. Students will know the achievements and limitations of these movements in regards to reducing inequality and improving democracy.



**ANT 429:001**  
**Medical Anthropology: Disease Detectives, Citizen Scientists, Racing for the Cure, And Other Ways of Thinking about Health**

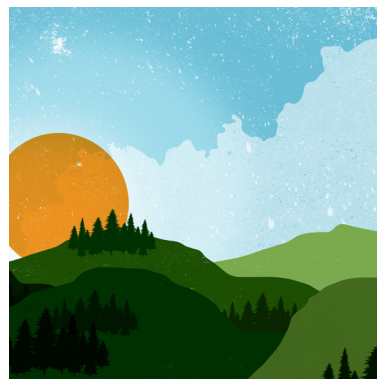
This course welcomes all students who are interested in exploring health, culture, and society. We begin with the discussion of health as a basic human right, according to the U.N. Declaration of Human Rights and the Alma Ata Declaration. Students will consider the place of anthropology studying different medical systems and models of health. Is wellbeing simply a matter of cultural perspective, or are there fundamentally different ways to treat illness and to be healthy?



**APP 200**  
**Introduction to Appalachian Studies**

Appalachia has a much more global and diverse history and culture than is often portrayed in media representations. This course will explore the region's economy, culture, literature, geography and role in the U.S. imagination over time.

FULFILLS UK CORE: COMMUNITY, CULTURE, CITIZENSHIP IN THE USA



**APP 200:001-007**  
**Introduction to Appalachian Studies**

Appalachia has a much more global and diverse history and culture than is often portrayed in media representations. This course will explore the region's economy, culture, literature, geography and role in the U.S. imagination over time.

FULFILLS UK CORE: COMMUNITY, CULTURE AND CITIZENSHIP IN THE USA



**PHY 151:001**  
**Introduction To Physics**

A lecture demonstration course covering the mechanics of solids, liquids, gases, heat and sound. Credit is not given to students who already have credit for PHY 201, 211 or 231.



**AST 192:001**  
**Stars, Galaxies And The Universe**

A course covering the universe outside the Solar System. A principle theme is the origin and evolution of stars galaxies and the universe at large. Topics also include black holes quasars and the big bang model of the universe. This course may be taken independently of AST 191.



**AST 191:001, 002, 402**  
**The Solar System**

A course emphasizing the nature origin and evolution of planets satellites and other objects in the Solar System. Topics also include historical astronomy the naked eye phenomena of the sky and modern solar system discoveries made by spacecraft. This course may be taken independently of AST 192.

FULFILLS UK CORE: THE NATURE OF INQUIRY IN THE NATURE, PHYSICAL, AND MATHEMATICAL SCIENCES



**ENG 107:001**  
**Introduction to Creative Writing**

This class will introduce students to fundamental concepts in imaginative writing – genres and craft, including fiction, nonfiction, and poetry. Students will study and practice writing in various modes through composition, peer critique, and research.

FULFILLS UK CORE: THE NATURE OF INQUIRY IN ARTS AND CREATIVITY



**ENG 171:001**  
**Global Literature in English**

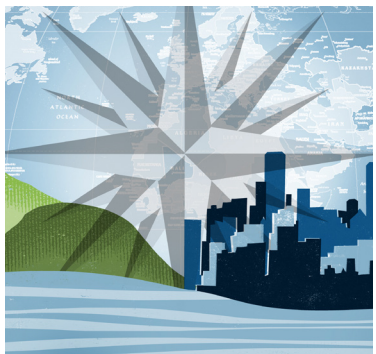
In 1827, JW von Goethe famously said, "National literature is now a rather unmeaning term; the epoch of world literature is at hand, and everyone must strive to hasten its approach." This experiment in reading extra-national literature turns to some of the language's most compelling novelists--such as JM Coetzee, James Joyceto-- explore the idea of global citizenship and cosmopolitan English.

FULFILLS UK CORE: GLOBAL DYNAMICS



**ENG 266:001**  
**Survey of African-American Literature II**

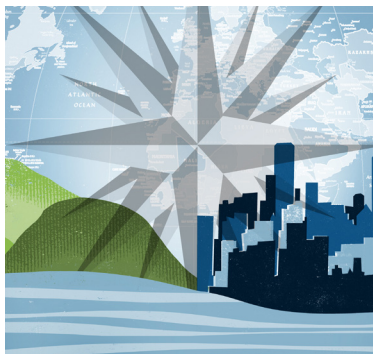
A survey of African-American literature from the Civil War to the contemporary period, with emphasis on selected genres, periods, and thematic characteristics of the African-American cultural and literary experience. Topics may include anticolonialism and abolitionism; Reconstruction; the Harlem Renaissance; Civil Rights; and debates about multiculturalism.



**GEO 162:001**  
**Introduction to Global Environmental Issues**

This course addresses environmental questions of global importance, including endangered species conservation, resource consumption, environmental degradation, toxic contamination and environmental justice.

FULFILLS UK CORE: GLOBAL DYNAMICS



**GEO 164**  
**iWORLDS: Global Information Geographies**

This course examines the ways that emerging information technologies are transforming places and the way in which we interact. It examines how different cultures produce distinct technologies and use technology in unique ways. We will focus on the history and evolution of mapping technologies to present day systems such as geographic information systems (GIS) and the geoweb. In addition, we will consider the spatial implications of information technologies, digital divides, surveillance and privacy, proximity and distance, democracy, and relationships between virtual, real-world and hybridized communities.

FULFILLS THE GLOBAL DYNAMICS REQUIREMENT OF GENERAL EDUCATION.



**GEO 323:001**  
**Mexico – Environment, Politics, and Society**

This course examines how politics, the environment, and socio-economic relations have shaped Mexico's contemporary social and cultural geography. Students will study how historical and contemporary processes such as agrarianism, urbanization (Mexico City), the Mexican Revolution, migration, and development have shaped the politics of identity, community, and geography, with particular attention to questions of gender, indigenous peoples, and popular culture.



**MCL 100:001**  
**The World of Language**

This course introduces students to some of the objects and methods of inquiry common to the different language areas and fields of study in MCL. Students will examine the structure and use of spoken language and written language as well as their sociocultural aspects and explore basic linguistic principles, the roles and function of language, and issues involved in first- and second-language acquisition.

FULFILLS UK CORE: NATURE OF INQUIRY IN THE HUMANITIES



**MCL 200:001**  
**Global Literacy**

A humanities course for the 21st century, this class "goes global" in unprecedented ways. Students will be team taught by expert instructors in eight different linguistic and cultural traditions (Arabic, Chinese, French, German, Ancient Greek, Italian, Japanese, Russian), it trains students in the analysis of a wide range of media (literary text, still image, film, etc.) that challenge cultural identities and cross national boundaries.

FULFILLS UK CORE: THE NATURE OF INQUIRY IN THE HUMANITIES



**PSY 302:001**  
**Psychology in Business and Industry**

Psychology is applied in many arenas other than mental health care. Psychologists help design smart phones, social media sites, and game consoles. They help investigate aviation accidents, select spies, and build effective surgical teams. They also help organizations create environments that support collaboration, creativity, and productivity. This course is a survey of five psychological specialties: consumer psychology, engineering psychology, personnel psychology, environmental psychology, and organizational psychology.



**PSY 333:001  
Abnormal Psychology**

This course is designed to examine some common and not-so-common psychological disorders, differentiating between what is considered normal emotional and behavioral responses from what society would deem abnormal. The focus will be on the description of these disorders, possible causal factors as well as treatments. Case studies, videos and classroom discussion should lead to a challenging but enjoyable experience for both psychology majors and non-majors alike.



**SPA 215:001  
Written Spanish for Bilingual Students**

This course is exclusively designed for bilingual speakers and its purpose is to further refine reading, lexical, and grammatical skills through intensive writing practice in contexts that are meaningful to these speakers. This course will be taught entirely in Spanish.

SPA 215 is the equivalent of 210 and 211 and fulfills the pre-major course requirements. Students taking 203 should refrain from taking this course.

PREREQ: ORAL INTERVIEW



**SPA 371:001-004  
LATIN AMERICAN CINEMA**

An introduction to the analysis and interpretation of cinema in general and Latin American cinema in particular. The course will focus on films from the Latin American schools of cinema. These films will be studied in their social, political, and cultural context and introduce students to basic critical vocabulary.

Class lectures in English; section 001 discussion section in Spanish and sections 002, 003 and 004 conducted in English.

FULFILLS UK CORE: INQUIRY IN THE HUMANITIES



**SPA 420:001  
Spanish in the World**

Spanish is considered the third most spoken language in the world. Although it is spoken in very distant regions, it enjoys certain uniformity that allows the speakers on both sides of the Atlantic Ocean to communicate easily. In this course we will deal with various aspects of Spanish in the world: Spanish in the USA, the expansion of Spanish through media and cinema, the languages of the Iberian Peninsula and the language politics of Latin America.

MY COURSES/NOTES:

---

---

---

---

---

---

---

---

---

---

---

---

---

---

---

---

---

---

---

---

---

---

---

---

---

---

---

---

---





[facebook.com/UK.Arts.and.Sciences](https://www.facebook.com/UK.Arts.and.Sciences)



[@ukartsci](https://www.instagram.com/ukartsci)



[@UKarts\\_sciences](https://twitter.com/UKarts_sciences)



[#ukartsci](https://www.threads.net/tag/ukartsci)



[www.as.uky.edu/fall](http://www.as.uky.edu/fall)

